

IDEAS TO STEAL FROM FIVE COZY SEASIDE HOMES

# COASTAL LIVING<sup>®</sup>

SOAK UP THE FUN!

## HOLIDAY DEALS

at 19 top resorts

This could  
be your view!  
page 64

Beachy  
Gifts  
50 UNDER \$50

Party Favorites  
OUR BEST APPETIZERS EVER!  
BRUNCH IN A BREEZE  
+ THE 12 DRINKS OF CHRISTMAS

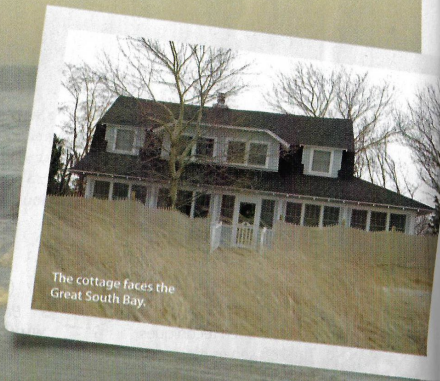
DECEMBER/JANUARY 2010

\$4.99US \$6.50CAN

12>



0 72440 10460 0



The cottage faces the Great South Bay.

**ON THE HOUSE**  
**STYLE** classic New England clapboard cottage with a color palette of earth, sky, and sea  
**SPACE** 3,200 square feet on two levels, with an open kitchen, a living room that seats eight, indoor/outdoor dining areas, five bedrooms, and a home office  
**SETTING** Fire Island is southeast of Long Island and separated from the mainland by Great South Bay.  
**VIEW** marshland hugging the curves of the bay

# WATER COLORING

IN A COZY COTTAGE ON FIRE ISLAND, NEW YORK, DESIGNER CATHY CHAPMAN USES BROAD STROKES OF GREENS, WHITES, AND BLUES TO CREATE A TIMELESS RETREAT

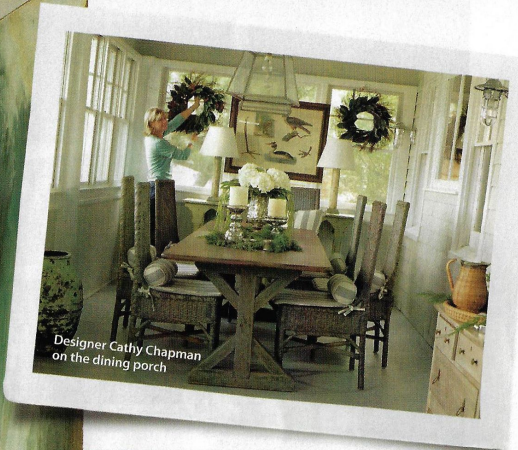
WRITER BEATY COLEMAN PHOTOGRAPHER TRIA GIOVAN STYLIST ELIZABETH RAINES BEELER



On the sunporch, a new painted settee pairs with an antique painted bench-turned-coffee table.

**DESIGNER TRICK**  
Hang antique transferware platters for a graphic, 3-D alternative to canvases and prints. For purchase info, visit [replacements.com](http://replacements.com).

**DESIGNER TRICK**  
Mount Roman shades high, just below the ceiling, to make short rooms seem taller.



Designer Cathy Chapman on the dining porch

# E

very design project has its challenges, but Cathy Chapman's Fire Island, New York, redo had more than its share. Not only was the house more than

1,600 miles away from her Houston, Texas, office (and her clients' primary residence), but the project also had to be completed during winter months to comply with strict regulations that limit construction on the island to the off season. And cars are not permitted on Fire Island, which meant renovation materials and installation deliveries had to arrive via pushcart.

But Cathy took one look at photos of the 1915 clapboard-and-shingled cottage and jumped at the opportunity to rescue it. "I'd always wanted to do a classic New England house like this one," she says. "The project constraints just made things more interesting."

## we love...

**THAT BEADED-BOARD CEILING,** especially painted a tranquil sea-green.

**WHITEWASHED WALLS**—divine on a knotty shiplap surface.

**ALL THE TRIMMINGS.** Piping and edging details pull together the living room's sea-green/chocolate scheme.

the architectural plans and embarked on a complete remodel, an eight-month process during which she visited the house only three times. Here's how, with classic style and Texas flair—and a very healthy long-distance relationship with her contractor—Cathy brought a shabby beach shack back to life.



**DESIGNER TRICK**  
Paint cabinetry a darker color to absorb light in an otherwise white kitchen. "Here, white on white would have been too bright," Cathy says.

#### THE DESIGNER'S ARCHITECTURAL TWEAKS

"I wanted to maintain as much of the original architecture as possible, because that vintage beach cottage look was the inspiration for the house's interiors," Cathy says. "I wanted it to work as an inside/outside kind of house."

All of the windows were replaced but not moved. Cathy added a small deck to the front of the house, where rocking chairs offer prime views of New York's Great South Bay. She didn't alter the floor plan but completely gutted the kitchen. Open shelves replaced existing upper cabinetry, a large center island added more counterspace, and the openings between the kitchen and dining room were widened.

#### ADDING SHIPLAP, BEADED BOARD, AND WHITEWASH

For a coastal look with a nod to the Texas Hill Country, Cathy clad the walls with shiplap, which she washed with watered-down paint applied directly to the raw wood. Beaded-board ceilings offset the horizontal shiplap boards. "Changing the scale and direction of wood adds visual interest,"

Cathy explains. For simple contrast, 1- by 4-inch casings trim all windows and doors.

The floors posed more of a quandary. The contractor and clients were initially uncomfortable with changing the dark stained wood, and likewise Cathy had intended to keep the original finish, "but as I got into the renovation, I realized that the spaces weren't big enough to handle such a dark color," she says. Determined to lend a light and airy quality to the small rooms, the designer had the floors stripped and stained white. "The simplicity helps details like fabric and paint color stand out," Cathy says.

#### THE COASTAL COLOR INSPIRATION

A floral print on the sunporch's sofa inspired the palette throughout the house. "I chose that print for its colors—sea blues and greens, white, and beige—all of which reflect the water, sky, grasses, and sand visible through the windows," Cathy says.

The same shades extend to painted surfaces, including the aqua porch floors, blue-green ceilings, and sea glass-green kitchen cabinets. Cathy dressed the pillows, draperies, and upholstery in complementary hues, with the exception of the living room, where sofas are covered in a chocolate brown



CABINERY PAINT IN ANTIQUE JADE (#65);  
BENJAMINMOORE.COM

Overscale, industrial pendant lights hang in the kitchen, where a checkerboard-painted floor anchors the space. For more painted floor inspiration, visit [coastalliving.com](http://coastalliving.com).

#### we love...

##### A WINDOW SEAT.

This one serves as extra seating for casual dinner parties. The one in the kitchen (left) is where you sit to chat with whoever's cooking.

##### ZINC-TOPPED TABLES—

a little industrial edge in this sea of softness, and easy to clean. ■ SHOP THE LOOK: For a similar table, try Mecox Gardens.



**DESIGNER TRICK**  
Opt for a miniskirt slipcover for a tailored yet casual—and washable!—dining chair upholstery treatment.



**DESIGNER TRICK**  
Paint walls, ceiling, and floor one color in slightly different tones for a soft, cozy look.

## we love...

**PORCHES YOU LIVE ON**—the durable fabrics and surfaces on the sunporch make it easy to come right in off the beach and catch some shade.

■ **SHOP THE LOOK:** Sconces, Circa Lighting

**PAIRING STRIPES WITH FLORALS.**

Offsetting the super-traditional print with graphic patterns keeps it looking fresh, not stiff. The color gray ties them together.

linen. “Everyone curls up in the living room, because that’s where the fireplace is,” she says. “The dark color adds warmth—and hides stains.”

### LITTLE FEMININE TOUCHES

Cathy prefers organic fibers, so loads of solid, striped, and floral-print linens and cottons give the house a cozy, warm feel. Though the textures are consistent throughout, every room has thoughtful details: pleated ruffles around the edges of throw pillows, cushions tufted with ties instead of buttons, exaggerated box pleats around the base of an ottoman, and graphic striped bolster pillows tied to the backs of dining chairs.

“I’m into things that catch your eye and make you take a second glance,” says Cathy, “but I try not to make a room too fussy—there’s only so much your eye can handle.” The designer pays

careful attention to the overall picture, never over-embellishing. “If you have a patterned fabric, the details need to be simple; if the fabric is plain linen you can opt for more-intricate adornments. The combination has to have balance to work,” she explains.

### THE LAST LAYER: ACCESSORIES

During the heavy construction months, Cathy stockpiled light fixtures, hardware, and other small items in her Houston office until it was time to deliver them at the end of winter. She chose finishing touches made of metal and glass for a hardened contrast to the sea of softness. Stainless steel bin pulls lend vintage charm to kitchen cabinets, while pendant lamps provide a touch of sleekness. Oversize glass jars, shell-crusted mirrors, and mercury glass candlesticks also add shine and gritty texture to the space.



**DESIGNER TRICK**  
Create a cool washed finish by watering down latex paint and wiping it onto raw, unfinished wood.

## we love...

**A MIX OF WOODS.** The guest room’s wainscoting, with beaded board laid vertically to contrast the walls and headboards, provides a picture ledge.

**BLEACHED FLOORS**—Cathy had the dark hardwoods stripped and then stained white for an airy, more spacious feel.

**A LITTLE FRINGE** to pretty up otherwise plain curtains and pillows.

# GET CATHY'S LOOK

INSPIRED BY THE VIEW OF THE SEA FROM THE FRONT PORCH, SOFT COLORS AND HEAVY TEXTURES DEFINE HER BEACH COTTAGE STYLE

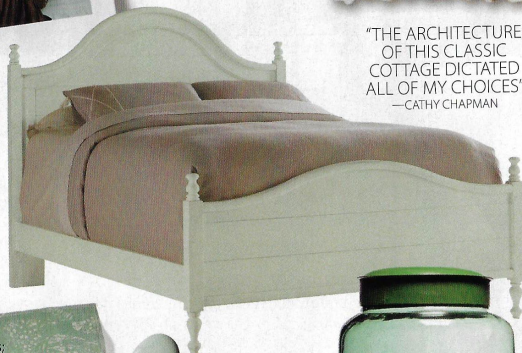
Designer  
Cathy  
Chapman

**My style** is warm and comfortable. I focus on furniture placement, with an emphasis on proper scale. A room should be inviting and have multiple seating options.

**I can't live without** fresh greenery and flowers, dressmaker details on fabrics, and natural fibers, like cotton and linen. No polyester!

**What I love about the coast:** color. The ocean fading from blue to green and back again, the brown trees and marsh grasses, and the sandy beaches.

Coastal Living  
Queen Bungalow  
Bed in Morning  
Sky, \$1,829;  
276/627-2540 or  
stanleyfurniture  
.com for retailers



Minos in Aquatics;  
raoutextiles.com  
for showrooms



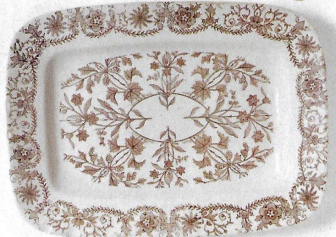
Seeds in Sky, available to the trade, Galbraith & Paul; 215/508-0800 or galbraithandpaul.com for showrooms

Kitchen cabinetry:  
Antique Jade (465);  
benjaminmoore.com  
for retailers

Sunporch ceiling:  
Handsome Prince  
(1083-D); 800/  
677-5270 or  
martinsenour.com  
for retailers



Green glass jar in Medium, \$53, Peddler's Home Design; 800/391-4927 or peddlersdesign.com for showrooms



Antique transferware platter, similar items available at 1stdibs.com or replacements.com

"THE ARCHITECTURE OF THIS CLASSIC COTTAGE DICTATED ALL OF MY CHOICES"  
—CATHY CHAPMAN



Oyster Shell Mirror, Square, \$310, Currey & Company; 877/768-6428 or curreycodealers.com for showrooms



Antique silver candleholders, \$24 each, and vintage urn with lid, \$105; 800/896-7266 or twoscompany.com for retailers



Arlon Chest in Heavily Distressed (F22), \$2,312, Aidan Gray; 469/568-8700 or aidangrayhome.com for retailers

Natural Wonders Giclée prints, \$199 each; 800/536-7551 or ballarddesigns.com



Davey Lamp in Weathered Copper, about \$170, Pedlars; www.pedlars.co.uk

we love...

**ANYTHING MONOGRAMMED**—the typewriter embellishments on these sleeping porch pillows are retro chic.  
**TICKING STRIPES.** This classic pattern works with every style, from vintage to modern.



**DESIGNER TRICK**  
Build in a daybed with room for baskets underneath to maximize lounging and storage space in limited square footage.