

# COASTAL LIVING®

## THE JOYS OF SUMMER!

The best boardwalks, beach  
reads, barbecues & more

**100+**  
BEACH HOUSE  
STYLE IDEAS

Chic accents for  
outdoor spaces

**THE MAN WHO  
RESCUED JFK**  
p. 70

JULY/AUGUST 2013

\$5.99US \$6.50CAN



Bring on the  
watermelon margaritas!



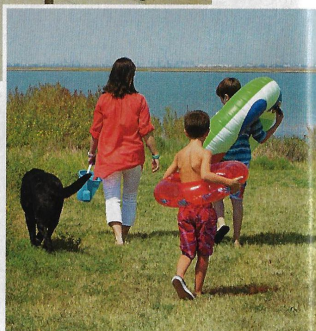


The countertops are Okite's Bianco Regina. The cabinets are painted Grecian Ivory by Sherwin-Williams.

## Good Company

A down-to-the-studs gut job turns a 1970s Texas sleeper into a charming cottage guesthouse

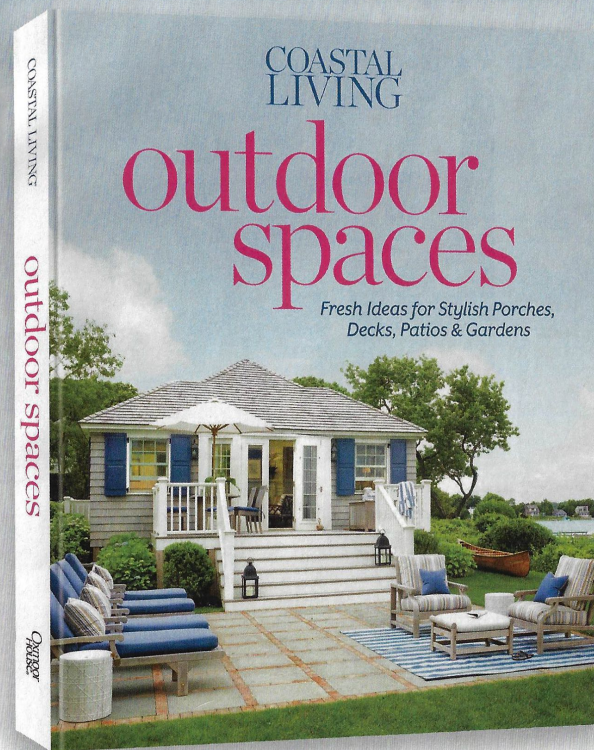
**W**hen Houston residents Ashley and David Coolidge built a sprawling, six-bedroom vacation retreat in Galveston's Pirate's Cove, they were looking forward to spending quality downtime there with family and friends. "Even though it's just 60 miles from home, once we get on the island, we feel like we're worlds away," says David. With four children of their own, as well as 11 beach-loving nieces and nephews, though, it wasn't long before they found themselves out of space. Luckily, they discovered a solution within close reach when a For Sale sign went up on the 1970s home directly across the street. "It was tiny and dated, but we figured we could turn it into the perfect guesthouse," David says. They bought it on the spot and, with the help of interior designer Cathy Chapman, oversaw a total renovation. Here, how they turned a small, passé place into an open and airy, modern abode.



**L**ook up vintage style. With the kitchen now open to the rest of the house, Chapman installed custom cabinets with a traditional aesthetic to bring cottage style to what had been a plain, charm-free space. Reproduction stools and vintage lighting add utility and an industrial, decorative edge. ➤

# Relax and Retreat

with *Coastal Living*



### INSIDE THIS GO-TO GUIDE:

- Easy ideas for beautiful decks and patios
- Coastal design inspiration and decorating tips
- Flowers and landscaping for amazing gardens
- More than 200 gorgeous pictures

From the editors of Coastal Living comes this comprehensive book about outdoor spaces—your essential source for creating and enjoying seaside style at home.

Available wherever books are sold  
or at [coastalliving.com/os](http://coastalliving.com/os)





The artwork is from Soicher Marin. The table lamp is from Lighting Treasures.



The table is a Round Top antique show find. The chandelier is from Brown.

**3** Foreshadow what's to come.

At the entrance (left), framed black-and-white prints of boats at sea reference the guesthouse's waterfront locale and set the stage for the vintage, nautical feel that pervades the house beyond the front door.

**4** Work with scale in mind.

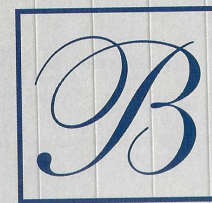
A slim console and table provide function and substance in the narrow dining room (above) without taking up too much space. That allows the checkerboard painted floors that appear throughout the main level to make an especially dynamic impact here. ➔

**2** Keep it simple.

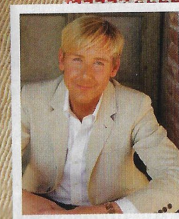
Furnishings and accessories in the new living room (right) are comfortable and stylish, but also low maintenance. The custom sofas were designed and fabricated by Chapman and covered in washable tan denim slipcovers, while pleated drapes were hung with simple wooden curtain rods and rings that make them easy to change out and wash. "No carpet also means less to clean, especially in a beach house," notes the designer. "You can just sweep up the sand."



The matching sofas are custom by the designer. The coffee table is from Sarreid.



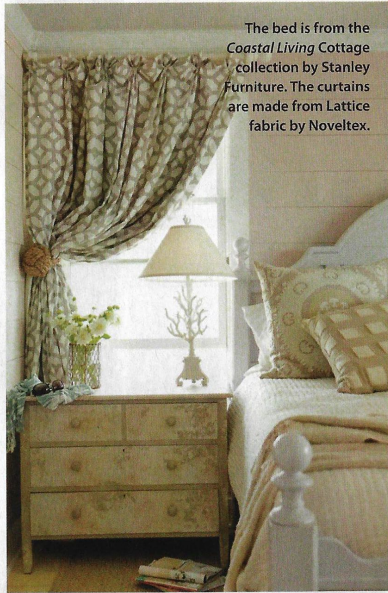
BARCLAY BUTERA  
LIFESTYLE



BY  
EASTERN ACCENTS  
WWW.BARCLAYBUTERA.COM



## COASTAL HAVENS



The bed is from the Coastal Living Cottage collection by Stanley Furniture. The curtains are made from Lattice fabric by Noveltex.



**THINK BIG!** Download the free Digimarc Discover app and scan the bedroom photo at left with your smartphone to find expert tips for making any small space feel grand, or visit [coastalliving.com/smallspace](http://coastalliving.com/smallspace)

### 5 Create interest with pattern and finishes.

The bedside location in this guest room (left) was the ideal spot for a vintage chest that Chapman had faux-painted and sealed with a crackle glaze. A graphic print on the custom curtains brings modern flair to the neutral palette and linens.

**6 Maximize a tiny sleeping space.** In this small bedroom (right), hooks line the wall—a practical solution to offset the lack of storage. Chapman also went with taller beaded board here to create the illusion of high ceilings for airy ambience.



The wainscoting and walls are painted Sherwin-Williams's Alabaster and Sea Salt, respectively.



Renovations to the rear elevations are by Kent & Kent Building Design and Alta Vista Development.

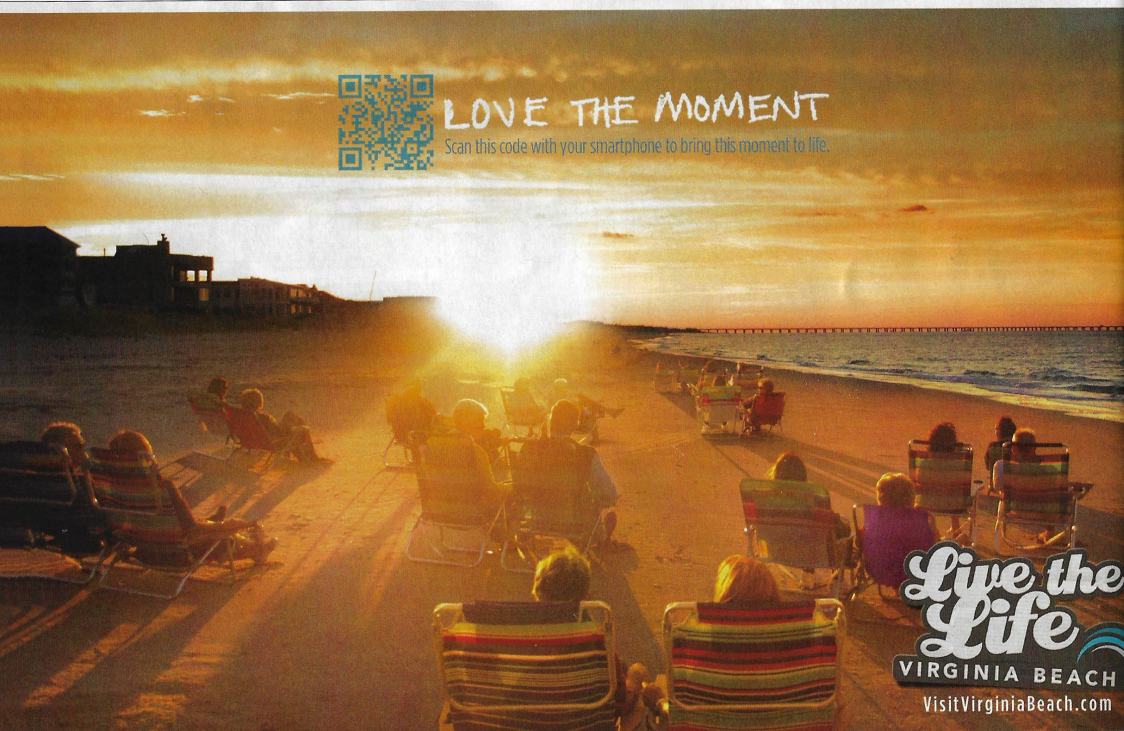
### 7 Open up to light and views.

The home's rear facade got a brand new look when the builders replaced its outdated sliding glass doors with French doors and installed second-story windows that provide impressive panoramic views of the inland bay. For more information, see Sources, page 104.



## LOVE THE MOMENT

Scan this code with your smartphone to bring this moment to life.



Live the Life  
VIRGINIA BEACH  
VisitVirginiaBeach.com

## You Supply The View... We Supply The Wood

- Responsibly harvested from managed forests
- 100% all natural, chemical free hardwood
- Naturally durable & dependable decking
- Proven to excel in extreme climates worldwide
- Low maintenance & competitively priced
- Up to 100 year lifespan without preservatives
- Ipe is three times stronger than Teak

WHAT MAKES IPE LAST 100+ YEARS?  
SCAN THIS QR CODE TO FIND OUT

Brazilian Walnut (Ipe) Decking - Malibu, CA

ADVANTAGELUMBER.COM

▶ US & Canada: 1-877-232-3915  
 ▶ International Sales: 941.388.9299